

Please choose your options for the workshop sessions (e.g. AM1, PM4). We hope to be able to give most people their first choices.

My morning workshop preference is

Choice 1: AM  Choice 2: AM  Choice 3: AM

My afternoon workshop preference is

Choice 1: PM  Choice 2: PM  Choice 3: PM

Do you have a visual impairment? Some alternative formats are available for all reading material required to be read in advance. Please indicate which of the following formats you are able to read:

Large Print  Audio  Braille

Are you a vegetarian? Yes  No

If you have any special requirements for the day (eg BSL signing) please give details.

(All areas used for this event have wheelchair access)

Coming by train? Tick here for details of the minibus shuttle service from Crewe Station

My favourite book over the last 18 months is:

Please return this form as soon as possible to:

Elizabeth Newall, Literature & Reading Development Officer, Cheshire County Council, Arts Service, Goldsmith House, Hamilton Place, Chester. CH1 1SE.

Your form should arrive no later than Friday 29 October. Early booking is strongly advised!

Queries? If you want to know more about the day feel free to call Elizabeth Newall on 01244 602898 or email Elizabeth.Newall@cheshire.gov.uk

This leaflet is also available in large print, Braille and on tape.

MORNING WORKSHOPS

Choose one from the following workshops:

**AM1 Lesley Glaister.** Lesley will lead an informal discussion on one of her recent novels, *Now You See Me*. "An emotionally engaging love story that moves with the pace of a thriller". Please read this book in advance; some free copies are available on booking.

**AM2 Bernard MacLaverly.** An editorial coup! Be the first appraisers of Bernard's latest short story, *Matters of Life and Death*, prior to publication. Bernard will use this as the basis for a discussion on the short story. A copy of *Matters of Life and Death* will be sent to you in advance.

**AM3 Preethi Nair.** It's not surprising the BBC has seen the potential in adapting *100 Shades of White* for TV, given the universal themes that run throughout of family, forgiveness and the power of truth. Please read this book in advance; some free copies are available on booking.

**AM4 Poetry: 'The flesh made word'.** In a relaxed and informal atmosphere, John Lindley explores the manner in which poetry reacts to and reflects on other art forms, such as painting, photography and cinema. Bring your own examples to share or just come to listen and enjoy.

**AM5 Classic Novel: North and South by Elizabeth Gaskell.** Is the subject of this classic still relevant today? Debate the issues of love across the social divide in a lively discussion led by Alison Platt from The Reader magazine. Please read this book in advance; some free copies are available on booking.

**AM6 Across the Great Divide.** Is there such a thing as a typical women's book or men's book? Led by host, Anne Caldwell, a range of titles that perhaps cross the gender divide will be explored, extracts read from some and own opinions formed on this topical issue. Extracts will be sent out in advance.

**AM7 Adventures into Audio: have you heard the one about...** Have you ever wondered how an audio book is created? Clipper Audio narrator Gordon Griffin, one of its best known voices, offers a fascinating insight into the life of a professional narrator. No advance reading required.

**AM8 The Road to Somewhere: for readers and writers.** MMU Creative Writing teachers Heather Leach and Robert Graham are co-authors of a new writers' handbook. This workshop will look at the many links between readers and writers. This taster session allows you to try some introductory writer's methods for yourself. No advance reading or writing required.

AFTERNOON WORKSHOPS

Choose one from the following workshops:

**PM1 An audience with Lesley Glaister.** Lesley will read from and talk about her latest novel *As Far as You Can Go*. No advance reading required.

**PM2 An audience with Bernard MacLaverly.** Hear Bernard talk about his writing career; why he's written on particular themes and how he goes about it. No advance reading required.

**PM3 An audience with Preethi Nair.** Your chance to hear Preethi's incredible true story about getting her first book into print, the basis of her third novel, *Beyond Indigo*. No advance reading required.

**PM4 An audience with John Lindley.** The Cheshire Poet Laureate reads his work, and hosts a question and answer session. John recommends individual poetry collections and anthologies worth investigating. No advance reading required.

**PM5 Modern Day Classic: Beloved by Toni Morrison.** Irralie Doel from The Reader magazine will lead a discussion on this book and why it is considered to be a modern day classic in every sense. Please read this book in advance; some free copies are available on booking.

**PM6 Across the Great Divide.** Is there such a thing as a typical women's book or men's book? Led by host, Anne Caldwell, a range of titles that perhaps cross the gender divide will be explored, extracts read from some and own opinions formed on this topical issue. Extracts will be sent out in advance.

Programme for the Day

Anne Caldwell is a writer, trainer, reader development specialist and community artist. Her poetry has been widely anthologized, and published by Virago. She has run many reading projects for libraries and is the training manager for the National Association for Literature Development.



- 9.30 Arrive, register, coffee
- 10.00 Welcome: Anne Caldwell, host for the day.
- 10.10 Authors' Panel – our authors talk about their reading and recommend a favourite book
- 11.00 Coffee
- 11.20 Morning workshops (choose from AM1-8)
- 12.30 Lunch\* and Readers' Fair\*\*
- 1.30 Readers' Testimonies: three Cheshire readers talk about the importance of books in their lives
- 2.00 The Readers' Quiz
- 2.10 Afternoon workshops (choose from PM1-6)
- 3.20 Tea
- 3.40 Answers to quiz, prizes & goodbyes
- 4.00 Exit with goody bags

\* A sandwich lunch is included in the booking fee

\*\* Readers' Fair – at the lunchtime fair, meet the authors, buy new books, have them signed and see what Cheshire Libraries and MMU have to offer.

A Bring-and-Buy bookstall will be run to raise funds for the National Library for the Blind. Please remember to bring a book to donate, and buy!

The partners would like to thank WF Howes, The Reader, Alsager Bookshop, Bloomsbury, HarperCollins, Ulverscroft and Random House for their support.



Cheshire County Council  
MMU Cheshire &  
Time to Read *present*

## Cheshire Readers' Day 2004

A day for  
everyone  
who loves  
books and  
reading

*With authors*

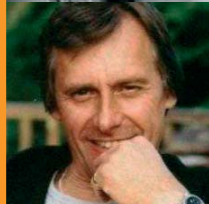
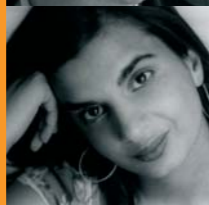
Lesley Glaister  
Bernard MacLavery  
Preethi Nair

& this year's Cheshire  
Poet Laureate,  
John Lindley

Saturday 13 November  
9.30am – 4.00pm

Alsager Campus MMU  
Hassall Road, Alsager,  
Near Crewe, Cheshire

This event is  
supporting the  
National Library  
for the Blind



Cheshire County Council, MMU Cheshire & Time to Read

Would like to invite you to a celebration of books and reading at MMU Cheshire, Alsager Campus, Hassall Road, Alsager, nr Crewe, Cheshire on Saturday 13 November 2004 from 9.30am-4pm.

Book-lovers will join authors Lesley Glaister, Bernard MacLavery, Preethi Nair and this year's Cheshire Poet Laureate, John Lindley, for a day to celebrate and share their reading. The Readers' Day features author events, reading workshops plus a Readers' Fair where you can 'Bring-and-Buy' old books, buy new books, and talk to authors and readers.

Workshops will also be led by *The Reader* magazine, *Manchester Metropolitan University* and *W F Howes*, who produce large print books and audio cassettes.

All are welcome – individual readers, reading group members or lovers of author events and literary festivals. If you like books, you'll enjoy the Cheshire Readers' Day. A sandwich lunch is included.

When you sign up for the Readers' Day, you'll receive information about your day, a map and directions. If you are coming by train, please ask about the Readers' Day shuttle service from Crewe Station to the campus.

*The deadline for applications is Friday 29 October 2004.* Please book as soon as possible. You will receive confirmation of your place by Friday 5 November. Don't forget that where appropriate, you'll need time to read the relevant material for your chosen workshops!

Cheshire Readers' Day 2004 is proud to be supporting the *National Library for the Blind*. We are looking to raise £1,000 at this event to transcribe a new title into Braille. Please help us bring the pleasure of reading to those for whom reading standard print is not possible. Information about making a donation is given on the booking form.

## The Authors



Lesley Glaister has written ten novels including: *Honour Thy Father*, which won the Somerset Maugham Award; *Limestone and Clay* for which she was named Yorkshire Author of the Year in 1993; and *Easy Peasy*, shortlisted for the Guardian Fiction Award. She tutors regularly at the Arvon Foundation, teaches the novel option at Sheffield Hallam University, and is a Fellow of the Royal Society of Literature.



Bernard MacLavery has published four collections of short stories and four novels including the highly acclaimed *Grace Notes* which was shortlisted for both the Booker and Whitbread awards. He has written versions of his fiction for other media – radio plays, television plays, and screenplays. He is a member of Aosdana in Ireland and is currently Visiting Writer at Liverpool John Moores University.



Preethi Nair worked as a management consultant before giving it up to follow her dream and write her first book, *Gypsy Masala*. She set up her own publishing company and PR agency to publish and promote the book, subsequently signing a three-book deal with HarperCollins. *100 Shades of White* has been bought by the BBC for TV; *Beyond Indigo* is a novel based on this incredible journey into print.



John Lindley is a prize-winning poet and creative writing tutor. Amongst his many projects, he is currently providing distance learning workshops for writers in Africa for the British Council. His latest collection of poetry is *Scarecrow Crimes*. John has been appointed Cheshire Poet Laureate for 2004.

## Booking Form

Side 1

I would like to book a place at the Cheshire Readers' Day on Saturday 13 November 2004.

I enclose a cheque for (please tick as appropriate) £15 (full fee)  or £10 (concessions)  payable to: Cheshire County Council

If you wish to make a voluntary donation to the **National Library for the Blind**, our nominated charity, please add this to the amount payable to *Cheshire County Council*. We are asking for donations of £5 per person, but any amount will help us reach £1,000 (the equivalent of one Braille master copy and three additional copies). Donations will be reimbursed to the National Library for the Blind.

My voluntary donation to the National Library for the Blind is: £

Please tick here to **Gift Aid** your donation at no extra cost to yourself.  (For every £1 you give, the NLB gets an extra 28p from the Inland Revenue).

Name

Address

Postcode

My daytime telephone number

My email address

The book I'm currently reading is:

Please complete side 2 of this form

